

A Measurement of Genuine Tor Traces for Realistic Website Fingerprinting

Rob Jansen[†]

Ryan Wails^{†‡}

Aaron Johnson[†]

[†]U.S. Naval Research Laboratory, [‡]Georgetown University

ABSTRACT

Website fingerprinting (WF) is a dangerous attack on web privacy because it enables an adversary to predict the website a user is visiting, despite the use of encryption, VPNs, or anonymizing networks such as Tor. Previous WF work almost exclusively uses *synthetic* datasets to evaluate the performance and estimate the feasibility of WF attacks despite evidence that synthetic data misrepresents the real world. In this paper we present GTT23, the first WF dataset of *genuine* Tor traces, which we obtain through a large-scale measurement of the Tor network. GTT23 represents real Tor user behavior better than any existing WF dataset, is larger than any existing WF dataset by at least an order of magnitude, and will help ground the future study of realistic WF attacks and defenses. In a detailed evaluation, we survey 25 WF datasets published over the last 15 years and compare their characteristics to those of GTT23. We discover common deficiencies of synthetic datasets that make them inferior to GTT23 for drawing meaningful conclusions about the effectiveness of WF attacks directed at real Tor users. We have made GTT23 available to promote reproducible research and to help inspire new directions for future work.

1 INTRODUCTION

Website fingerprinting (WF) is a dangerous attack on web privacy because it enables an adversary that can observe a user’s outgoing connections to predict the website the user is visiting [6, 15, 16, 24, 42], even if those connections are protected with encryption, virtual private networks (VPNs), or anonymizing networks such as Tor [13]. WF attacks are particularly serious against Tor because they can break Tor’s anonymity [5, 9–11, 14, 21, 28–31, 34–39, 46, 47, 49].

Consistent with previous WF work, we consider an adversary that uses machine learning (ML) to carry out WF attacks against Tor users from a vantage point on the entry side of the Tor network. In using ML for WF, *accurately labeled traces* (i.e., examples) are required (1) to train WF classifiers to form correct associations between encrypted traffic patterns and destination websites, and (2) to evaluate classifier efficacy. A major problem for the adversary is that information about the destination website needed to label the traces is encrypted by Tor’s onion routing scheme [43]

when observed from the entry position. Thus, the adversary needs some other method to collect labeled traces.

Through a survey of 25 WF datasets published over the last 15 years (see §4), we find that all but a *single* prior study consider an adversary that collects labeled traces using an automated browser that programmatically fetches a set of selected webpages through Tor [2]. Such *synthetic* datasets have been criticized as unrepresentative of genuine Tor traffic along numerous axes [21, 23, 32, 36], and their use has led WF research to fall victim to several common ML evaluation pitfalls such as the base rate fallacy [3, 10, 23].

In an effort to address the serious limitations of synthetic WF datasets, a recent study by Cherubin et al. [10] considers a WF strategy in which the adversary uses a Tor exit relay to collect *genuine* traces, which can be observed and labeled by a relay in the exit position. Genuine traces exhibit the real-world diversity in all factors that might influence classifier performance, and they enable researchers to more accurately evaluate the WF performance that we expect an adversary might realistically attain in the real world. Unfortunately, this prior study was done in a *fully online* setting in order to avoid persistently storing genuine data or trained WF classifiers. As a result, it is impossible to replicate their results, and it is difficult to build on the methodology. Indeed, many later works have continued to study WF using synthetically generated datasets [4, 11, 21, 25, 27, 37].

In this paper we present GTT23, the first WF dataset of labeled *genuine Tor traces*. We describe a large-scale Tor relay measurement plan that we designed to prioritize safety and privacy, which we developed through consultation with our organization’s Institutional Review Board and with the Tor Research Safety Board [44]. We executed our reviewed measurement process to safely measure 13,900,621 circuits to 1,142,115 unique destination domains and 68 unique destination server ports during a 13-week measurement period. We analyze GTT23 and find that 96% of the measured circuits use ports 80, 8080, or 443 to first connect to a destination, that most of the measured circuits carry fewer than 25 cells (<10.5 KB), and that just a single circuit was measured for over 80% of the measured domains. Our analysis of GTT23 helps demonstrate the high degree of traffic diversity with which a WF adversary must contend when launching WF attacks in the real world.

We further evaluate GTT23 to compare its genuine characteristics to those of existing synthetic WF datasets. First, we survey 25 WF datasets published over the last 15 years and identify several common deficiencies of synthetic datasets. We find that synthetic datasets are composed of a single traffic type (web) using simplistic user models and static software tools while focusing on website *index pages* at uninformed base rates. Second, we conduct a detailed analysis of the statistical disparities between GTT23 and two recent synthetic datasets that are specifically designed for more complex *website* fingerprinting wherein a website contains multiple accessible webpages. We find that the circuit-length variation and website base rates are still not reflected well in the synthetic datasets despite the improved modeling.

We conclude that, because GTT23 contains genuine traces of websites accessed by real Tor users at natural base rates, it is more realistic than any existing synthetic dataset, and thus it will enable WF evaluations that more accurately estimate real-world WF performance. We have made GTT23 available to researchers upon request [22] to help ground the future study of realistic WF attacks and defenses.

2 METHODOLOGY

2.1 Background

To use Tor, a client builds long-lived *circuits*, each through an *entry*, a *middle*, and an *exit* relay. Each circuit supports multiplexing multiple *streams* of end-to-end TCP communication with internet services. When a new TCP connection to a service is requested by an application (e.g., Tor Browser), the Tor client will use fixed-size application-layer control messages called *cells* to instruct the exit relay to (1) resolve the service’s domain name, and (2) make a TCP connection to the service. Each of a circuit’s TCP byte-streams is subsequently forwarded bidirectionally through the circuit in data cells; the time-ordered sequence of (direction, time) pairs (one for each cell sent through a circuit) is called a *cell trace*.

A TCP stream may be assigned to any circuit with an exit relay that allows connection to the destination’s IP address and port; if no such circuit exists, a new one is built after choosing an exit independently at random from among those with conforming exit policies and weighted by relay bandwidth to balance load. However, Tor Browser employs additional stream assignment rules. When loading a webpage URL, Tor Browser computes the URL’s first-party domain name (FPDN) and instructs the Tor client to assign all streams created to load that URL (including those to third-party domains to load embedded objects) on a circuit uniquely associated with the FPDN and isolated from other streams.

Browsing to a page of a new website in Tor Browser will result in a unique FPDN and a new circuit tasked with first resolving a DNS query for the FPDN and then loading the page,

while subsequent subpages of that website will be loaded through the same circuit. Cherubin et al. thus recognized that (1) the FPDN in the circuit’s first DNS query can be used to *label* the website of a circuit’s cell trace, and (2) an adversary running exit relays can observe *genuine* cell traces and their domain name labels, which can be used to train WF classifiers and produce more realistic estimates of WF performance [10]. (Non-exit relays can observe cell traces but not domain names due to onion routing [43].) Unfortunately, their study considered a fully online setting to avoid persistently storing genuine data or trained WF classifiers; thus a new measurement is needed to build on the methodology.

2.2 Measurement Process

We designed a measurement process that employs one or more Tor exit relays to safely measure genuine Tor cell traces and FPDN labels for subsequent WF analysis. Each participating relay runs a patched version of Tor that we modified to support our measurement as follows.

2.2.1 Circuit Selection. When a relay observes a new circuit, it rejects any non-exit type circuit (i.e., onion-service and internal circuits) from measurement. Additionally, the relay applies a probabilistic sampling procedure such that 80% of exit-type circuits are rejected during *high-volume* measurement intervals, and 98% of exit-type circuits are rejected during *low-volume* measurement intervals. Sampling helps us limit the total size of the dataset and provides plausible deniability: any individual circuit created through a participating relay is unlikely to exist in the dataset. Non-rejected circuits are selected for further measurement.

2.2.2 Circuit Measurement. A relay internally stores circuit metadata and cell traces during operation for the randomly selected exit-type circuits. We use an encoding function $H(x)$ to protect some of this metadata:

$$H(x) = \text{base64encode}(\text{sha256}(x||\text{salt})) \quad (1)$$

where *salt* is chosen uniformly at random, fixed on all measurement relays for the duration of the measurement period, and then destroyed. Tor’s existing internal implementations are used for the $\text{base64encode}(\cdot)$ and $\text{sha256}(\cdot)$ functions. The relay iteratively constructs a circuit metadata record for each selected circuit (applying $H(\cdot)$ to domain names) until either the circuit closes or N cells have been observed, whichever occurs first.¹ The metadata record is then exported via Tor’s control interface to an external process that compresses it, encrypts it with a public-key encryption scheme,² and writes it to persistent storage.

¹We use $N = 5,000$ cells to remain consistent with previous work.

²We encrypt to an offline secret key to prevent on-device decryption.

Listing 1: Example circuit metadata record.

```

{
  "day": 2,
  "domain": "Dnqty37vYTIeivWhAEikb7HlJOzWXEZ2Rw05iicG7e8",
  "shortest_private_suffix": "bIKFK8gYicwptEMM1Goxlo7KredMMFx48VD0MpXn9zc",
  "port": 443,
  "cells": [
    [ 0.000015, 1, 10, 0 ], // client -> exit: create
    [ 0.000463, -1, 11, 0 ], // exit -> client: created
    [ 10.932340, 1, 9, 1 ], // client -> exit: relay_early.begin
    [ 12.070954, -1, 3, 3 ], // exit -> client: relay.connected
    [ 13.421017, 1, 9, 2 ], // client -> exit: relay_early.data
    [ 13.421030, -1, 3, 2 ], // exit -> client: relay.data
  ]
}

```

Each metadata record includes the following as exemplified in Listing 1: (1) *day*: an integer number of days that have elapsed since the start of the measurement; (2) *domain*: $H(d)$ where d is the domain name of the circuit’s first exit stream;³ (3) *shortest_private_suffix*: $H(s)$ where s is the shortest private suffix of the pre-image of *domain* computed using Mozilla’s public suffix list and `libpsl` [7]; (4) *port*: the server port used when connecting the circuit’s first exit stream to its destination; and (5) *cells*: a list of at most N cell metadata items. Each cell metadata item is a 4-tuple containing the time the cell was observed relative to the circuit’s creation time, an integer encoding the cell’s direction, and two integers encoding the cell and relay command, respectively [12].

2.3 Safety and Ethical Considerations

Our measurement process was designed to prioritize safety and privacy and was developed through consultation with our organization’s Institutional Review Board (IRB) and the Tor Research Safety Board (TRSB) [44]. Our IRB qualified our study as non-human-subject research, and our TRSB interaction resulted in a “No Objections” score and instructions to move forward with our plans. Extended analysis of the safety, risks, and benefits of our measurement and details about IRB and TRSB interactions are provided in Appendix A.

3 MEASUREMENT AND ANALYSIS

3.1 Measurement Details

We execute a large-scale Tor measurement study following our methodology from § 2. First, we run a total of eight exit relays, four on each of two identical machines hosted by the Calyx Institute (a nonprofit research and education organization located in NY, USA). Each machine is equipped with 2 Intel Xeon E5-2695 v2 12-core CPUs (48 hyper-threads in total) and connected to an unmetered 1 Gbit/s symmetric network access link. Second, we run a measurement over

³Circuits for which the first exit stream connects to the destination with an IP address instead of a domain name are rejected from measurement.

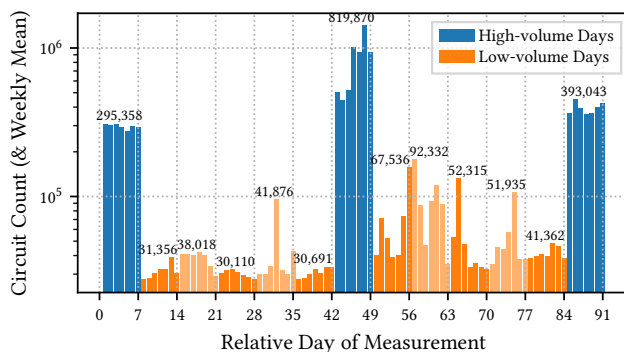


Figure 1: The daily total (bars) and weekly mean (text) number of circuits during our 13 week measurement.

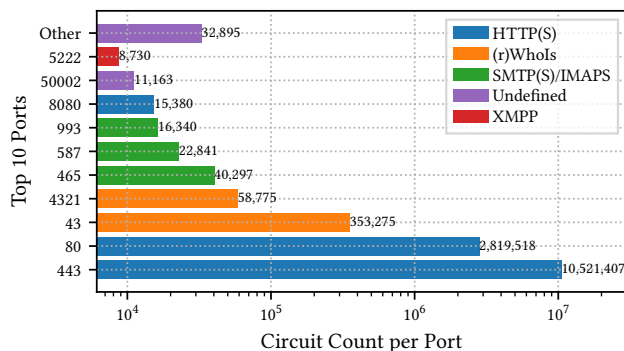


Figure 2: The total number of GTT23 circuits by server port, with IANA-assigned service names [45].

a 13 week period in 2023; we assign weeks 1, 7, and 13 as high-volume intervals, and the remaining 10 weeks as low-volume intervals. We combined all recorded circuit metadata records into a single dataset which we call GTT23⁴ [22].

3.2 Data Analysis

In total, GTT23 contains 13,900,621 circuits, 10,557,898 of which were observed during the high-volume weeks (1, 7, and 13) and 3,342,723 of which were observed during the remaining 10 low-volume weeks.

The daily total and weekly mean number of GTT23 circuits are shown in Fig. 1; the daily mean during high-volume weeks is 502,757 and the daily mean during low-volume weeks is 47,753. We observe a slight increase in circuit counts during the latter half of the measurement period which we attribute to natural fluctuation in network usage and the load-balancing weights used for relay selection.

⁴GTT: an acronym for “Genuine Tor Traces”; 2023: the year of measurement.

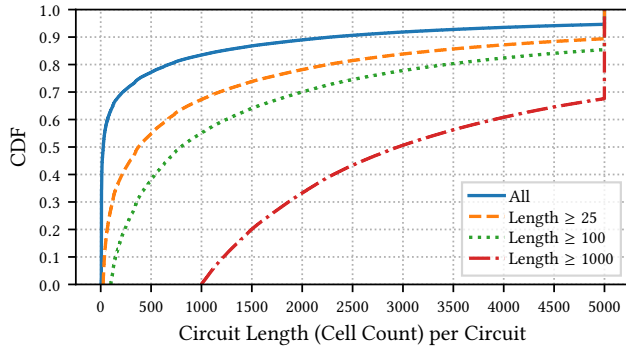


Figure 3: Cumulative distribution of the number of cells per circuit over subsets of GTT23 circuits.

Table 1: Total Web Page Transfer Size (KB) in 2023-08[†]

Client	Percentile:	10th	25th	50th	75th	90th
Desktop		547	1,226	2,484	4,967	9,744
Mobile		457	1,063	2,179	4,377	8,946

[†] HTTP Archive: <https://httparchive.org/reports/state-of-the-web>

GTT23 contains circuits measured across 68 unique destination server ports. The distribution of the number of measured circuits across the top-ten most-popular service ports is shown in Fig. 2 (with a logarithmic x-axis, and the IANA-assigned service names shown in the legend). We observe that 13,356,305 circuits (96%) use ports 80, 8080, or 443 to connect their first stream to a destination service; these ports are assigned to HTTP and HTTPS by the IANA [45]. The vast majority of the remaining circuits use port 43 or 4321, which are respectively assigned to WhoIs and Remote WhoIs services by the IANA. Frequent connections to these ports have been observed in prior studies of Tor exit traffic [40, 41]: Sonntag observed that they corresponded to a large number of reverse DNS lookups scanning several large networks [40].

The cumulative distribution of the number of observed cells per GTT23 circuit is shown in Fig. 3. We were surprised to find that most circuits are extremely short: the median number of cells over all circuits is just 25, which would support at most 10.5 KB of application payload after accounting for control cells and cell-header overhead. For comparison, we also plot in Fig. 3 the circuit length distribution for the subsets of circuits containing at least 25, 100, and 1,000 cells, respectively corresponding to 10.5, 47.8, and 496 KB of application payload. For reference, the HTTP Archive reports that over 90% of webpages have a transfer size greater than 450 KB across samples of 12 and 16 million desktop and mobile URLs, respectively (see Table 1). Thus, we believe that most GTT23 circuits did not carry full webpage transfers.

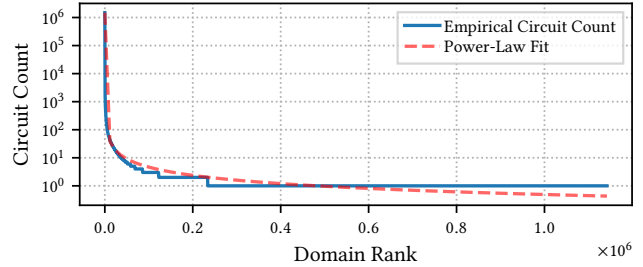


Figure 4: The number of GTT23 circuits per domain; we observe a close fit to a power-law distribution.

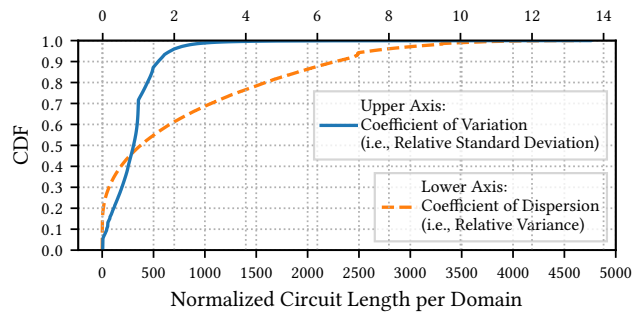


Figure 5: Cumulative distribution of circuit length variation across domains with at least two GTT23 circuits.

GTT23 contains circuits measured across 1,142,115 unique destination domains. The distribution of the number of measured circuits per domain is plotted in Fig. 4. We observe a close fit to a power-law distribution (shape=0.023, loc=0.769, scale=1,495,234), where few popular domains dominate the measurement while a long tail exists with just a single circuit measured for 908,422 (80%) of the domains.

Note that obtaining realistic base rates for the domains visited by Tor users is a major advantage of GTT23 over synthetic datasets. In open-world binary classification, the negative class is composed of traces to all sites other than the monitored ones. Thus, the false-positive rate, which is crucial for estimating precision [46], depends on the base rates in the negative class. Similarly, in a multiclass setting (open or closed world), overall WF accuracy depends on the base rates of each class.

Fig. 5 shows the cumulative distribution of two measures of circuit length variability for each domain with more than one GTT23 circuit. The median Coefficient of Variation (i.e., the standard deviation divided by the mean) shows that more than half of the domains have a circuit length standard deviation greater than the mean, while the Coefficient of Dispersion (i.e., the variance divided by the mean) shows that most domains have a relative variance in circuit lengths of multiple hundreds of cells. The high variability in circuit

lengths is consistent with our prior observation that most of the measurement circuits are short, and suggests that many Tor circuits may completely or prematurely fail.

4 EVALUATION

In this section, we compare GTT23 and synthetic datasets to understand how well the synthetic datasets model some of the genuine data characteristics that are important for WF.

4.1 Deficiencies of Synthetic Datasets

We survey 25 datasets proposed for WF tasks covering the past 15 years (2008–2023). In Table 2 we provide an overview of the properties of a select set of the surveyed datasets, chosen for their size, complexity, and frequency with which they are used to evaluate later attacks. For a full comparison of dataset characteristics, see Table 3 in Appendix B.

In analyzing the 25 surveyed datasets, we find that every dataset exhibited similar deficiencies: (1) they consist of only web traffic; (2) they are collected using simplistic user models and static software tools, almost exclusively at the client position; (3) they primarily focus on fetching popular webpages; and (4) they do not contain informed base rates. In contrast, real Tor clients use a wide variety of software and software versions, interact with non-web services, and do more than just non-interactively fetch selected webpages. These deficiencies make it difficult to use existing datasets to draw meaningful conclusions about the effectiveness of a WF attack directed at real Tor users [10, 23].

In comparison, GTT23 is the only dataset with traces sampled from genuine traffic created by real Tor users interacting with real internet services at natural base rates. GTT23 is not limited to only web traffic: it contains traces of all types of internet activity and supports the evaluation of WF attacks and defenses based on websites’ first-party domain names (see §2.1). More realistic traces better represent the WF problem, and researchers could use them to more accurately evaluate the true threat posed by a real-world WF adversary. Moreover, GTT23 is larger than the previous largest dataset (Rimmer et al.’s AWF dataset [36]) by an order of magnitude which is important to assess modern deep learning attacks requiring many training examples. We provide an extended description of our survey results and analysis in Appendix B.

4.2 Genuine and Synthetic Disparities

We analyze the statistical disparities between GTT23 and synthetic datasets to understand dataset quality. We place particular emphasis on the trace features found in prior work [14] to be informative for WF. We focus our analysis on two recent synthetic datasets, BigEnough [27] and GoodEnough [33], that were specifically designed to model *website* fingerprinting; both datasets contain at least ten pages per website and

Table 2: Select WF Datasets (full details in Table 3)

Dataset	Year	Size	Description [†]
<i>k</i> -NN [47]	2014	1.4×10^4	Web, top index pages
AWF CW ₉₀₀ [36]	2017	2.3×10^6	Web, top index pages
AWF Open [36]	2017	8×10^5	Web, top index pages
DF [38]	2018	1.4×10^5	Web, top index pages
GoodEnough [33]	2020	2×10^4	Web, top index pages + subpages
BigEnough [27]	2021	3.8×10^4	Web, top index pages + subpages
Multi-tab [11]	2022	5.7×10^5	Web, top index pages, multiple tabs
GTT23	2023	1.4×10^7	Genuine traffic, real user behavior, visited services, natural base rates

[†] All but GTT23 synthetically fetch webpages using automated tools.

thus, of all surveyed datasets, they best represent the higher website diversity found in the real world.

4.2.1 Dataset Composition. The GTT23 dataset contains traces generated from real users interacting with any services accessible via the internet (including non-web services), whereas synthetic datasets such as BigEnough and GoodEnough contain traces generated from automated visits to small number of popular websites. Empirical data from this work and previous work suggests that Tor users do not just visit popular websites. First, Fig. 2 shows that a long tail ($\approx 4\%$) of GTT23 traces are generated from interactions with hosts not running on known web ports such as 80, 443, or 8080. Second, a privacy-preserving measurement of the Tor network performed in 2018 [26] determined that over 20% of web streams exiting the Tor network access a host not in the Alexa Top 1 Million list. This long tail of activity is not reflected in the synthetic datasets and make the WF classification task more difficult [30].

4.2.2 Data Modeling. Even simple features computed from the synthetic datasets do not accurately model genuine Tor traces. Consider, for example, overall trace length, a feature shown in prior work to be informative in the WF task [14]. The leftmost plot in Fig. 6 shows, for all 3 datasets, the distribution of each domain’s median circuit length (cell count) for circuit traces with at least 1,000 cells and among those, domains with at least 30 traces. The plot shows that GTT23 traces tend to be shorter than synthetic dataset traces. GoodEnough traces, in particular, tend to be much longer than genuine traces: roughly 70% of GoodEnough domains have a median circuit length of 5,000 cells (the capture limit), whereas this is true of only 32% of domains in the GTT23 dataset. Inaccurate data modeling makes it difficult to draw meaningful conclusions from the synthetic datasets [3].

4.2.3 Intra-class Variance. Genuine user traces contain a much richer set of activity than is generated by synthetic, automated crawls to webpages. Genuine traces may be generated from various unpredictable user-initiated behaviors

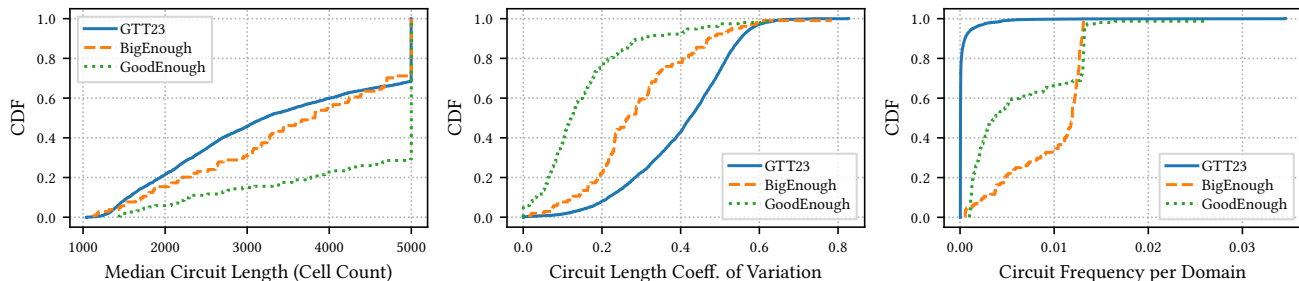


Figure 6: Per-domain statistics computed from the GTT23, BigEnough [27], and GoodEnough [33] datasets. For statistical rigor, here we consider traces with at least 1,000 cells and, among those, domains with at least 30 traces.

and processes and may reflect complex, interactive sessions with internet hosts, whereas synthetic traces are usually generated by a single, fixed crawling application such as tor-browser-selenium [2] and are limited to simple page accesses. The center plot in Fig. 6 shows the distribution of the coefficient of variation of trace length—that is, the ratio of the trace length’s standard deviation to the mean—for each dataset’s domains. At nearly every percentile, the coefficient is higher for GTT23 domains than it is for BigEnough or GoodEnough domains, suggesting that GTT23 traces exhibit higher variation. Because the concept of each domain is richer in the genuine data, accurate WF is more difficult.

4.2.4 Base Rates. Recall that the frequency of website occurrence in the GTT23 dataset is characterized by a few heavy hitters and a long tail of rarely accessed sites (see Fig. 4). In contrast, the rightmost plot of Fig. 6 shows that most domains in the synthetic datasets occur with much higher frequency. For example, the median domain occurs with frequency 5×10^{-4} in GTT23. In comparison, the median domain in the BigEnough and GoodEnough dataset occur with frequencies that are orders-of-magnitude greater, 1×10^{-2} and 4×10^{-3} . Base rate realism is an important aspect of evaluating WF attacks because increasingly low false positive rates are needed to maintain precision at low base rates of occurrence [8, 23, 46]. Precisely fingerprinting most websites in GTT23 requires orders-of-magnitude lower false positives rates compared to BigEnough and GoodEnough.

5 CONCLUSION AND FUTURE WORK

Our goal in this work is to ground the future study of realistic WF attacks and defenses while promoting reproducible research. Toward this goal, we designed a safe Tor measurement methodology through consultation with the TRSB [44] and our institution’s IRB. We executed the methodology across eight Tor exit relays to measure 13,900,621 circuits and compose GTT23, the first dataset of genuine Tor traces. We analyze GTT23 to better understand the characteristics of genuine Tor data, and evaluate the extent to which existing

synthetic WF datasets misrepresent genuine characteristics. We conclude that, because GTT23 contains genuine traces of websites accessed by real Tor users at completely natural base rates, it is more realistic than any existing synthetic dataset and thus it will enable WF evaluations that more accurately estimate real-world WF performance.

GTT23 can be used to conduct both training and testing of WF classifiers in either an offline or an online streaming model. During training, GTT23 can provide genuine examples not only of a target class of websites, but also of the background class; negative class examples are important for training classifiers to be robust against the high-diversity WF patterns we find in practice. However, it is even more important to incorporate genuine traces while testing WF classifiers to accurately represent the challenge facing a real-world adversary deploying an attack. Future work should consider new WF classification techniques that are specifically developed and tuned to genuine traces to further improve our understanding of the real world WF performance an adversary can expect to attain.

One limitation of GTT23 is that the labels were created by randomizing website domains with an irreversible hash function due to privacy and ethical requirements. While this may seem to inhibit our ability to synthesize GTT23 with other labeled datasets, many emerging self-supervised ML training methods [4, 28, 39] have unsupervised pre-training phases that learn how to generally differentiate websites without the need for labels. Such approaches could leverage GTT23 for pre-training to benefit from the genuine patterns it contains, and then use a different labeled dataset with many fewer traces for fine-tuning the pre-trained models.

There are also applications outside of WF. The traffic statistics of GTT23 regarding Tor usage are of independent interest, since previous Tor measurement studies are already outdated by more than five years [20, 26]. Additionally, GTT23 could be used to enhance the realism and fidelity of Tor network testbeds and simulations [18, 19] since the traces encode the timing and patterns of genuine user activities.

GTT23 is available to researchers upon request [22] to help ground the future study of WF attacks and defenses in more accurately estimating real-world WF performance.

REFERENCES

- [1] Kota Abe and Shigeki Goto. 2016. Fingerprinting attack on Tor anonymity using deep learning. *APAN*, 42.
- [2] Gunes Acar, Marc Juarez, and individual contributors. 2023. Tor-browser-selenium - Tor browser automation with Selenium. <https://github.com/webfp/tor-browser-selenium>. (2023).
- [3] Daniel Arp, Erwin Quiring, Feargus Pendlebury, Alexander Warnecke, Fabio Pierazzi, Christian Wressnegger, Lorenzo Cavallaro, and Konrad Rieck. 2022. Dos and don'ts of machine learning in computer security. In *USENIX Security 2022*. (2022).
- [4] Alireza Bahramali, Ardavan Bozorgi, and Amir Houmansadr. 2023. Realistic website fingerprinting by augmenting network traces. In *ACM CCS 2023*. (2023). doi: 10.1145/3576915.3616639.
- [5] Sanjit Bhat, David Lu, Albert Kwon, and Srinivas Devadas. 2019. Var-CNN: A data-efficient website fingerprinting attack based on deep learning. *PoPETs*, 2019, 4, (2019). doi: 10.2478/popets-2019-0070.
- [6] George Dean Bissias, Marc Liberatore, David D. Jensen, and Brian Neil Levine. 2005. Privacy vulnerabilities in encrypted HTTP streams. In *PET 2005*. Vol. 3856. (2005). doi: 10.1007/11767831_1.
- [7] 2023. C library for the public suffix list. <https://github.com/rockdabot/libpsl>. <https://publicsuffix.org>. (2023).
- [8] Xiang Cai, Rishab Nithyanand, Tao Wang, Rob Johnson, and Ian Goldberg. 2014. A systematic approach to developing and evaluating website fingerprinting defenses. In *ACM CCS 2014*. (2014). doi: 10.1145/2660267.2660362.
- [9] Xiang Cai, Xin Cheng Zhang, Brijesh Joshi, and Rob Johnson. 2012. Touching from a distance: website fingerprinting attacks and defenses. In *ACM CCS 2012*. (2012). doi: 10.1145/2382196.2382260.
- [10] Giovanni Cherubin, Rob Jansen, and Carmela Troncoso. 2022. Online website fingerprinting: evaluating website fingerprinting attacks on Tor in the real world. In *USENIX Security 2022*. (2022). EPRINT: <https://www.usenix.org/conference/usenixsecurity22/presentation/cherubin>.
- [11] Xinhao Deng, Qilei Yin, Zhuotao Liu, Xiyuan Zhao, Qi Li, Mingwei Xu, Ke Xu, and Jianping Wu. 2023. Robust multi-tab website fingerprinting attacks in the wild. In *2023 IEEE Symposium on Security and Privacy*. (2023). doi: 10.1109/SP46215.2023.10179464.
- [12] Roger Dingledine and Nick Mathewson. 2003. The Tor protocol specification. Accessed: September 30, 2023. <https://gitlab.torproject.org/tpo/core/torspec/-/blob/main/tor-spec.txt>.
- [13] Roger Dingledine, Nick Mathewson, and Paul F. Syverson. 2004. Tor: the second-generation onion router. In *USENIX Security 2004*. (2004).
- [14] Jamie Hayes and George Danezis. 2016. *k*-fingerprinting: A robust scalable website fingerprinting technique. In *USENIX Security 2016*. (2016).
- [15] Dominik Herrmann, Rolf Wendolsky, and Hannes Federrath. 2009. Website fingerprinting: attacking popular privacy enhancing technologies with the multinomial naïve-bayes classifier. In *The Workshop on Cloud Computing Security*.
- [16] Andrew Hintz. 2002. Fingerprinting websites using traffic analysis. In *PET 2002*. Vol. 2482. (2002). doi: 10.1007/3-540-36467-6_13.
- [17] Rob Jansen. 2023. Constructing a real-world dataset for studying website fingerprinting. (2023). <https://lists.torproject.org/pipermail/tor-project/2023-April/003604.html>.
- [18] Rob Jansen and Nicholas Hopper. 2012. Shadow: running Tor in a box for accurate and efficient experimentation. In *NDSS 2012*. (2012).
- [19] Rob Jansen, Jim Newsome, and Ryan Wails. 2022. Co-opting linux processes for High-Performance network simulation. In *USENIX ATC 2022*. (2022). EPRINT: <https://www.usenix.org/conference/atc22/presentation/jansen>.
- [20] Rob Jansen, Matthew Traudt, and Nicholas Hopper. 2018. Privacy-preserving dynamic learning of tor network traffic. In *ACM CCS 2018*. doi: 10.1145/3243734.3243815.
- [21] Rob Jansen and Ryan Wails. 2023. Data-explainable website fingerprinting with network simulation. *PoPETs*, 2023, 4, (2023). doi: 10.56553/popets-2023-0125.
- [22] Rob Jansen, Ryan Wails, and Aaron Johnson. Gtt23: a 2023 dataset of genuine tor traces. Version 1.0.0. (2024). doi: 10.5281/zenodo.10620520.
- [23] Marc Juárez, Sadia Afroz, Gunes Acar, Claudia Díaz, and Rachel Greenstadt. 2014. A critical evaluation of website fingerprinting attacks. In *ACM CCS 2014*. (2014). doi: 10.1145/2660267.2660368.
- [24] Marc Liberatore and Brian Neil Levine. 2006. Inferring the source of encrypted HTTP connections. In *ACM CCS 2006*. (2006). doi: 10.1145/1180405.1180437.
- [25] Limam, Noura, Barradas, Diogo, Arun Naik, Shreya, Singh, Prabhjot, and Malekghaini, Navid. 2023. A first look at generating website fingerprinting attacks via neural architecture search. In *WPES 2023*.
- [26] Akshaya Mani, T Wilson-Brown, Rob Jansen, Aaron Johnson, and Micah Sherr. 2018. Understanding Tor usage with privacy-preserving measurement. In *ACM IMC 2018*.
- [27] Nate Mathews, James K Holland, Se Eun Oh, Mohammad Saidur Rahman, Nicholas Hopper, and Matthew Wright. 2023. SoK: a critical evaluation of efficient website fingerprinting defenses. In *2023 IEEE Symposium on Security and Privacy*. (2023). doi: 10.1109/SP46215.2023.10179289.
- [28] Se Eun Oh, Nate Mathews, Mohammad Saidur Rahman, Matthew Wright, and Nicholas Hopper. 2021. GANDaLF: GAN for data-limited fingerprinting. *PoPETs*, 2021, 2, (2021). doi: 10.2478/popets-2021-0029.
- [29] Se Eun Oh, Saikrishna Sunkam, and Nicholas Hopper. 2019. p-FP: extraction, classification, and prediction of website fingerprints with deep learning. *PoPETs*, 2019, 3, (2019). doi: 10.2478/popets-2019-0043.
- [30] Andriy Panchenko, Fabian Lanze, Jan Pennekamp, Thomas Engel, Andreas Zinnen, Martin Henze, and Klaus Wehrle. 2016. Website fingerprinting at internet scale. In *NDSS 2016*. (2016).
- [31] Andriy Panchenko, Lukas Niessen, Andreas Zinnen, and Thomas Engel. 2011. Website fingerprinting in onion routing based anonymization networks. In *WPES 2011*.
- [32] Mike Perry. 2013. A critique of website traffic fingerprinting attacks. <https://blog.torproject.org/blog/critique-website-traffic-fingerprinting-attacks>.
- [33] Tobias Pulls. 2020. Towards effective and efficient padding machines for tor. *arXiv preprint arXiv:2011.13471*.
- [34] Tobias Pulls and Rasmus Dahlberg. 2020. Website fingerprinting with website oracles. *PoPETs*, 2020, 1, (2020). doi: 10.2478/popets-2020-0013.
- [35] Mohammad Saidur Rahman, Payap Sirinam, Nate Mathews, Kantha Girish Gangadhara, and Matthew Wright. 2020. Tik-Tok: the utility of packet timing in website fingerprinting attacks. *PoPETs*, 2020, 3, (2020). doi: 10.2478/popets-2020-0043.
- [36] Vera Rimmer, Davy Preuveneers, Marc Juárez, Tom van Goethem, and Wouter Joosen. 2018. Automated website fingerprinting through deep learning. In *NDSS 2018*. (2018).
- [37] Meng Shen, Kexin Ji, Zhenbo Gao, Qi Li, Liehuang Zhu, and Ke Xu. 2023. Subverting website fingerprinting defenses with robust traffic representation. In *USENIX Security 2023*. (2023). EPRINT: <https://www.usenix.org/conference/usenixsecurity23/presentation/shen-meng>.
- [38] Payap Sirinam, Mohsen Imani, Marc Juárez, and Matthew Wright. 2018. Deep fingerprinting: undermining website fingerprinting defenses with deep learning. In *ACM CCS 2018*. (2018). doi: 10.1145/3243734.3243768.

- [39] Payap Sirinam, Nate Mathews, Mohammad Saidur Rahman, and Matthew Wright. 2019. Triplet fingerprinting: more practical and portable website fingerprinting with N-shot learning. In *ACM CCS 2019*. (2019). doi: 10.1145/3319535.3354217.
- [40] Michael Sonntag. 2019. Malicious DNS traffic in Tor: analysis and countermeasures. In *ICISSP*.
- [41] Michael Sonntag and René Mayrhofer. 2017. Traffic statistics of a high-bandwidth Tor exit node. In *ICISSP*.
- [42] Qixiang Sun, Daniel R. Simon, Yi-Min Wang, Wilf Russell, Venkata N. Padmanabhan, and Lili Qiu. 2002. Statistical identification of encrypted web browsing traffic. In *2002 IEEE Symposium on Security and Privacy*. (2002). doi: 10.1109/SECPRI.2002.1004359.
- [43] Paul F. Syverson, David M. Goldschlag, and Michael G. Reed. 1997. Anonymous connections and onion routing. In *1997 IEEE Symposium on Security and Privacy*. doi: 10.1109/SECPRI.1997.601314.
- [44] 2023. The Tor research safety board. (2023). <https://research.torproject.org/safetyboard>.
- [45] Joe Touch, Eliot Lear, Kumiko Ono, Wes Eddy, Brian Trammell, Jana Iyengar, Michael Scharf, Michael Tuexen, Eddie Kohler, and Yoshifumi Nishida. 2023. Service name and transport protocol port number registry. (2023). <https://www.iana.org/assignments/service-names-port-numbers/service-names-port-numbers.txt>.
- [46] Tao Wang. 2020. High precision open-world website fingerprinting. In *2020 IEEE Symposium on Security and Privacy*. (2020). doi: 10.1109/SP40000.2020.00015.
- [47] Tao Wang, Xiang Cai, Rishab Nithyanand, Rob Johnson, and Ian Goldberg. 2014. Effective attacks and provable defenses for website fingerprinting. In *USENIX Security 2014*. (2014).
- [48] Tao Wang and Ian Goldberg. 2013. Improved website fingerprinting on Tor. In *WPES 2013*. doi: 10.1145/2517840.2517851.
- [49] Tao Wang and Ian Goldberg. 2016. On realistically attacking tor with website fingerprinting. *PoPETS*, 2016, 4, (2016). doi: 10.1515/popets-2016-0027.

APPENDICES

A ETHICS

In this section we describe our consideration of ethics as we developed and executed our Tor network measurement plan.

A.1 Safety

The primary safety guidelines driving our measurement study include collecting only what is adequate, relevant, and necessary for our purpose (data minimization), limiting the granularity of the data that is collected, ensuring security of the measurement infrastructure and confidentiality of the measurement data, and limiting access to measurement infrastructure to a single author.

We took numerous specific precautions to make sure our measurement is as safe as possible. First, our measurement is carried out exclusively by relays under our control, which are identified as part of the same relay family following relay operator best practices. Our measurement is completely passive: it does not alter the default Tor protocol and does not add any load to the network. Second, we use probabilistic sampling to randomly select circuits for measurement. While sampling enables us to limit the total data volume

and maintain an accurate, genuine distribution of website access frequency, it also provides plausible deniability for Tor users because any individual circuit that used our relays during measurement is still unlikely to appear in the dataset. Third, we chose to exclude absolute timestamps from the dataset, and we do not precisely specify when the measurement occurred. Precise absolute timing information is not required for WF and there may be some privacy benefit to excluding it. Fourth, we use an irreversible encoding function (Eqn. 1) to protect the destination domain name and provide a website label that is consistent within our dataset but whose mapping can no longer be reproduced since the salt was erased. Finally, we encrypt all records using the public part of a public-key encryption scheme before writing to persistent storage or transferring over a network. The secret key is stored offline to prevent unauthorized decryption.

A.2 Risks

Our measurement process is designed to be consistent with Tor’s threat model in which exit relays can only observe the destination side of the circuit but cannot link this data to the client side of the circuit. Our measurement data alone cannot be used to identify any individual client.

An adversary could possibly augment our exit-side data patterns with their own client-side flows collected during our measurement period and attempt an end-to-end correlation attack to link a client they observed to a record in our dataset. We mitigated this risk by mapping the true domain name to a random string label using an encoding function that cannot be reproduced or reversed (Eqn. 1), so that a successful correlation attack would still be unable to precisely identify the visited destination. In order to fully deanonymize a flow, the adversary would need to combine the correlation attack with a confirmation attack wherein they link a known *labeled* flow to a record in our dataset, enabling them to map the random string output of Eqn. 1 to a known label. While not impossible, we believe that such a multi-step attack would be imprecise and thus there is a low risk that it would be successful on a large scale in practice.

A.3 Benefits

Measurement and publication of our genuine website fingerprinting dataset can help researchers and practitioners improve Tor’s protections against traffic analysis attacks and better quantify the risks that traffic analysis poses to users. Our dataset improves realism relative to synthetic datasets and can help other researchers quickly get started designing WF attacks or defenses without first needing to perform possibly network-invasive measurement themselves. Our dataset also promotes reusability and reproducible research,

and may make it more likely that WF defenses developed in research will work well in the real world.

A.4 Alternatives

One alternative to our measurement approach is to recruit volunteers to opt-in to a measurement study and then only collect patterns on circuits initiated from volunteers. This alternative was rejected because it produces biased samples of traffic at synthetic base rates and it involves human subjects which would add significant additional risk to our study.

A.5 Board Review

We consulted our organization’s Institutional Review Board (IRB) to determine if our measurement study required further evaluation as human-subject research. The board determined that our study qualifies as non-human-subject research because we are not directly interacting with subjects nor will the network data we are gathering enable us to identify the people who may be using the network.

We also submitted a document detailing our measurement plans and ethical analysis to the Tor Research Safety Board (TRSB) for review. The review of our initial submission identified several important aspects of our measurement plan that were underspecified, including details around the scope of measurement and our plan for informing stakeholders. Additionally, our submission presented multiple possible methods of dataset release with a request for feedback on the most appropriate. The board expressed preference for a controlled release where the dataset would only be shared with verified researchers upon request. Following an interactive discussion, we extended our measurement plan to include the requested details and plans for a controlled release of the dataset. Following re-review of our updated submission, we received a “No Objections” score and were instructed to move forward with our plans.

A.6 Community Notification

We notified the Tor community of our plans through a post to the tor-project mailing list [17]. The primary feedback we received was that we should collect *more* data, which we decided against following the principle of data minimization.

B SURVEY OF EXISTING WF DATASETS

We surveyed prior work related to website fingerprinting attacks in order to better understand the datasets used to quantify attack effectiveness. We evaluated each dataset among a number of different dimensions, as follows.

Year: the time the dataset was collected;

Activity: the kind of user behavior contained in the dataset;

User model: the way in which users perform the activity;

Trace generation software: the tools used in activity creation;

Size: the number of classes and traces in the dataset;

Availability: the accessibility of the dataset to others;

Attacks: the WF attacks originally evaluated on the dataset.

We also noted how each dataset was recorded (that is, the software used and trace observation point, if provided).

The summary of results is shown in Table 3. All datasets surveyed were composed of primarily web activity. Most datasets assume users interact with popular websites, usually those present in the now-discontinued “Alexa Internet” top websites ranking. A few works consider more sophisticated user behaviors: Herrmann et al. [15] collect URLs obtained from monitoring an academic proxy server they had access to; Juárez et al. [23] collect URLs obtained from volunteers browsing the Internet; Panchenko et al. [30] considered URLs obtained from observing Tor HTTP exit traffic, as well as from interacting with popular Internet services such as Twitter and Google; and Deng et al. [11] collected URLs from volunteers browsing the Internet.

The task designated for each dataset may vary. For example, RND-WWW [30], Juárez et al. [23], GDLF-25 [28], GoodEnough [33], and BigEnough [27] are designed to incorporate multiple pages for each of many websites. AWF Recollect [36] and WTT-Time [29] are designed to explore aspects of concept drift. DS_{Tor} contains .onion sites in addition to ordinary websites. Multi-tab [11] contains only browsing behavior occurring simultaneously in several browser tabs.

All extant datasets are collected synthetically with an automated crawl, often using a single set of software to generate flows (Juárez et al. [23] and Deng et al. [11] both consider the effect that varying versions of Tor Browser Bundle (TBB) may have on attacks). Additionally, nearly every work uses tcpdump to collect packet traces on the *client* generation machine. Only GoodEnough, BigEnough, and $D(tbs, tor)$ [21] collect cell traces using the tor process directly; GoodEnough and BigEnough are collected at the client position, whereas $D(tbs, tor)$ is collected at the guard position.

Inconsistent purposes, over-simplified user models, and static collection software make it difficult to draw meaningful conclusions about the effectiveness of a WF attack directed at real Tor users. Real Tor clients use a wide variety of software (most network applications supporting SOCKS5 can be used with Tor), interact with non-web services, and do more than just non-interactively fetch random pages on the web. In contrast, *GTT23 is the only dataset addressing these weaknesses*—it contains traces from real Tor client interacting with real internet services. Moreover, GTT23 is larger than the previous largest dataset by an order of magnitude (AWF CW_{900} [36]) and is larger than most other existing datasets by multiples orders of magnitude; this volume of data is important when training modern deep learning models which may require millions of examples to be effective.

Table 3: Summary of website fingerprinting datasets curated over the past 15 years. The ‘ \perp ’ symbol is used to indicate a dataset is unnamed, and the ‘-’ symbol is used when a cell’s contents are identical to the above cell. When the year of data collection is not mentioned, we assume it is around (“ca.”) the associated article’s publication date. Not all datasets describe their trace generation software with the same specificity. N, N_C, N_I, N_{Bg} are the total number of traces in the dataset, the number of positive classes, the number of instances per positive class, and the number of background traces. The “Attacks” column shows a list of WF attack papers evaluated on the dataset.

Ref.	Name	Year	Activity	Activity Detailed	User Model	Trace Gen. Software	N	N_C	N_I	N_{Bg}	Available	Attacks
[15]	\perp (Hermann)	2008	Web	Links from real-world academic proxy server	Index page	Autofox	8.5×10^3	775	≈ 10		Dead link	[15]
[9]	\perp (Cai)	Ca. 2012	Web	Alexa top sites	Index page	tor 0.2.1/2	3.2×10^4	800	≈ 40		No	[9]
[48]	levdata2	Ca. 2013	Web	Alexa top sites	Index page	tor 0.2.4.7; TBB 2.4.7	4×10^3	100	40		Online	[30, 48]
-	levdata3	-	-	Popular blocked sites, Alexa top sites	-	-	9×10^2	4	10	8.6×10^2	-	-
[47]	k -NN	Ca. 2014	Web	Sensitive sites, Alexa top sites	Index page	TBB 3.5.1; iMacros 8.6.0	1.4×10^4	100	90	5×10^3	Online	[1, 29, 30, 39, 47–49]
[23]	\perp (Juárez)	Ca. 2014	Web	Alexa top sites, volunteer browsing	Index page, visited pages	TBB (2/3.X); Selenium	4.3×10^4	200	≈ 40	3.5×10^4	On request	[23]
[49]	\perp (Wang)	2014	Web	Sensitive sites, Alexa top sites	Index page	tor 0.3.6.4; TBB 3.6.4	9×10^3	100	40	5×10^3	No	[49]
[30]	RND-WWW	Ca. 2016	Web	Twitter, Alexa one-click, Google Trends, Google Random, censored sites	Random subpage	TBB 3.6.1; Chickenfoot; iMacros; Scriptish	1.6×10^5	1,125	40	1.2×10^5	Dead link	[30]
-	TOR-Exit	-	-	HTTP requests of real Tor users	Visited page	-	2.1×10^5			2.1×10^5	-	-
-	WEBSITES	-	-	Popular websites	Index page, random subpage	-	5.3×10^3	50	105		-	-
[14]	DS_{Tor}	Ca. 2016	Web	Alexa top sites, popular .onion sites	Index page	TBB; Selenium	1.1×10^5	85	≈ 90	1×10^5	Dead link	[14, 29]
[36]	AWF CW_{900}	2017	Web	Alexa top sites	Index page	tor 0.2.8.11; TBB 6.5; Selenium	2.3×10^6	900	2,500		Online	[5, 28, 29, 36, 39]
-	AWF Recollect	-	-	-	-	-	1×10^5	200	500		-	-
-	AWF Open	-	-	-	-	-	8×10^5	200	2,000	4×10^5	-	-
[38]	DF	Ca. 2018	Web	Alexa top sites	Index page	tor-browser-selenium	1.4×10^5	95	1,000	4.1×10^4	Online	[28, 35, 38, 39]
[29]	WTT-time	2018	Web	Alexa top sites	Index page	tor 0.4.0.8; tor-browser-crawler	8×10^4	100	300	5×10^4	On request	[29]
[33]	Good Enough	2020	Web	Alexa top pages, random subpage	Index page	TBB 9.0.2	2×10^4	500	20	1×10^4	Online	
[46]	\perp (Wang)	2019	Web	Alexa top sites	Index page	tor 0.4.0.1; TBB 8.5a7	1×10^5	100	200	8×10^4	Partially Online	[46]
-	Wikipedia	-	-	Wikipedia browsing	Random subpage	-	2×10^4	100	100	1×10^4	-	-
[28]	GDLF-25	Ca. 2021	Web	Alexa top sites	Random subpage	tor-browser-crawler	9.4×10^4	2,400	39		On request	[28]
-	GDLF-OW	-	-	Links from Rimmer et al. [36]	Random subpage	-	7×10^4			7×10^4	-	-
[27]	BigEnough	2021	Web	Open PageRank top pages	Index page	TBB	3.8×10^4	950	20	1.9×10^4	On request	
[11]	Multi-tab	2022	Web	Alexa top pages	Index page (multi-tab)	TBB; Selenium	5.7×10^5				Online	[11]
[21]	D (tbs, tor)	2022	Web	Wikipedia browsing	Random subpage	tor-browser-selenium	2×10^4	98	200		Online	
[4]	Drift	Ca. 2023	Web	Popular websites, links from Rimmer et al. [36]	Index page	TBB 11.0.10; tor-browser-selenium 0.6.3	1.5×10^4	90	≈ 110	5×10^3	Online	[4]
	GTT23	2023	Any	Real Tor usage	Visited service	Real client software	1.4×10^7	$\langle 1.1 \times 10^6 \text{ domains} \rangle$			On request	